



New Zealand Scaffolding **Supplies** Limited

0800 475 2657

Quarterly Fitting

July 2008



What are
you waiting
for???

If you would like to discuss anything in this newsletter please contact your customers services representatives:

Free Phone 0800 475 2657

Auckland 09 294 7090

Wellington 04 237 9356

Christchurch 03 381 5243

Email: Inquiry@nzscaffolding.co.nz

Website: www.nzscaffolding.co.nz

New Zealand Scaffolding Supplies Limited is your one stop shop for all your scaffolding needs!!



**BUY OVER 100 Wrapover Single Couplers
&**

You will receive one **FREE Double side Ratchet Spanner**

Phone Today 0800 4752657

Freight Charges may apply

Offer Ends 31st July 08, while stock last

CHCH Branch

Be Quick !!!

. I would like to thank everyone for the support. The feedback I've had is that the South Island is still constantly busy, as we are still receiving inquiries and orders (Thanks very much) from Gore up both coasts thru The Picton and The Southern Lakes areas. With the trend seeming to be quoting on more house lots and commercial size projects, not to forget the customers that only need 1 or 2 sets of H/Frames to add to their existing stock.

As mentioned in our last newsletter the manufacturing is carried out at our Christchurch branch, at the start of the year the company installed a new Nachi robotic welder, which can turn out a fully welded frame in ... minutes. Obviously with any new machinery you always have some fine-tuning to be done. This machine which we haven't named yet has got to be a step forward for the company in keeping with ISO9001: 2000 accreditation.

Once again we thank you all for your existing support and we look forward to continuing to supply all of your scaffolding needs.

Cheers

John Wielsma
Southern Sales Manager

Skyline System Offer!



2 H Frames + 2 Braces + 4 Base Plate

This is the last time at these prices.
Steel prices going up 30% in August 08 and Price increases on all products will be announced at the end of July. So beat the price raise and buy **NOW**.

Phone Today 0800 4752657
Freight Charges may apply

Funnies

\$100 Voucher

Batman and Robin are camping in the desert, set up their tent and are asleep. Some hours later, Batman wakes his faithful friend. “ Robin, look up at the sky and tell me what you see”.

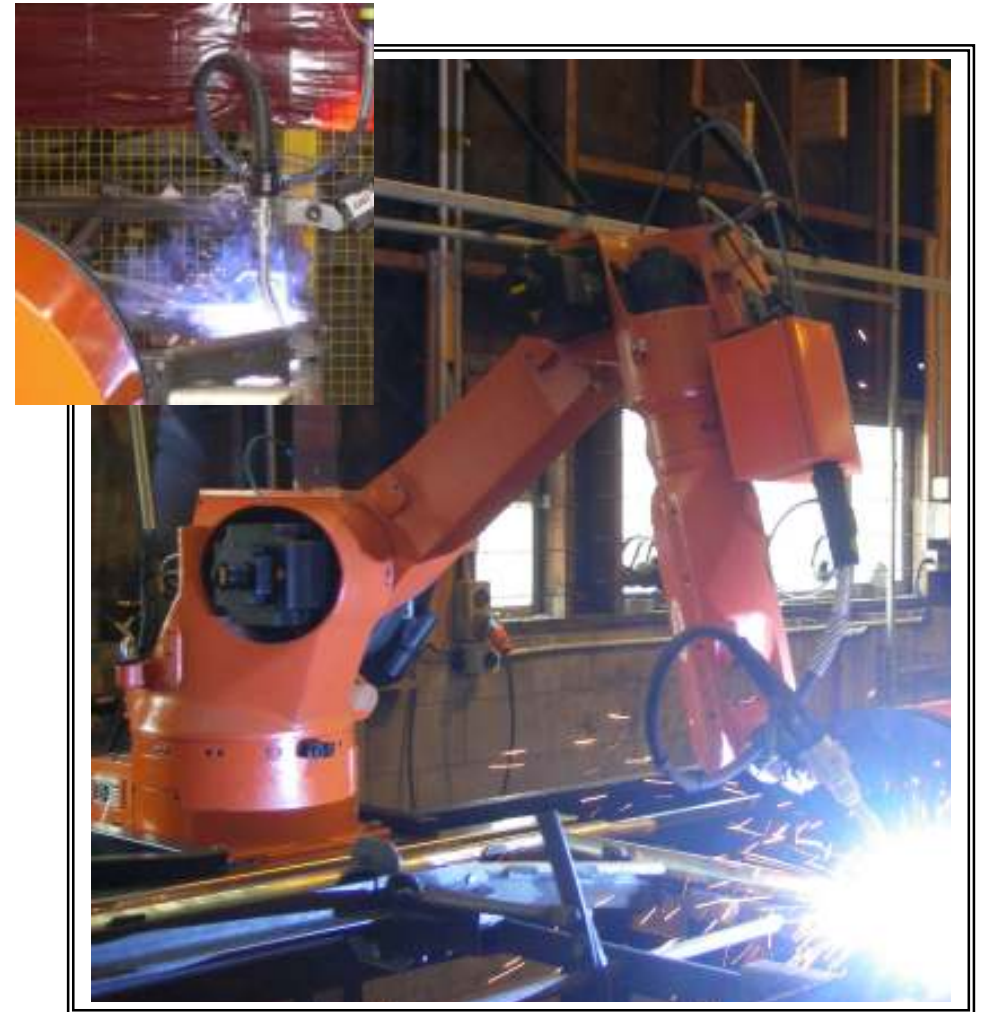
Robin replies, “ I see millions of stars”.

“What does that tell you?” asks Batman.

Robin ponders for a minute. Astronomically speaking, it tells me that there are millions of galaxies and potentially billions of planets.

Astrologically, it tells me that Saturn is in Leo. Chronologically, it appears to be approximately a quarter past three. Theologically, it's evident the Lord is all-powerful and we are small and insignificant. Meteorologically, it seems we will have a beautiful day tomorrow. What does it tell you, Batman?”

Batman is silent for a moment, then speaks:” Robin, you F**king Idiot, someone has stolen our tent



**NAME.. New Zealand Scaffolding Supplies
new Robotic Welder and win a \$100 voucher**

Come on give it a go, how hard can it be!!!!

Employee's Profile

Safety

Robyn Mcmillan

Christchurch Office Administrator

Fav Music.....Rock.
Fav Sport.....Rugby
Fav Car.....Rav 4
Fav Place.....Christchurch
Fav Country.....New Zealand
Fav Team...Do You Have to ask (Crusaders)
Fav Food.....Roast
Fav Radio StationThe Edge
Fav Colour...Anything that's not Pink.
Ambition in Life..To enjoy life to the full, life is too short



Your safety is our primary concern so please read the following tips when using your scaffolding:

- Remember to **BE AWARE** a fall from any height can cause serious injury.
- Avoid using the scaffold in adverse **WEATHER** conditions as the tube and decking will become slippery if wet or icy.
- **LIFT ONLY TO YOUR CAPABILITY**
- Ensure your scaffold is **SECURED** properly before use.
- Watch when erecting scaffolding for **OVERHEAD** hazards (Phone Lines and Power Lines, falling materials etc.)
- Always use properly **SECURED AND FITTED** ladders and/or stairs to access all scaffolding
- Always **VISUALLY CHECK** the scaffold is free from damage before and during use.
- If unsure **SEEK ADVICE** from a certified scaffolder or DoL (Department of Labour).

For more information refer to

- **Health and Safety Act 1995.**
- **Approved Code of Practise for the Safe Erection and Use of Scaffolding (OSH: 1995)**
- **Best Practice Guidelines for Scaffolding in New Zealand. Published by Scaffolding and Rigging New Zealand Incorporated 2002. Revised 2003.**

ISO Update

Sales Trip 08

On 18/06/08 New Zealand Scaffolding Supplies Ltd passed the ISO9001: 2000 audit **AGAIN...**



If we continue this great achievement, our auditor will extend our audit period from every 6 months to every 9 months!!!!

Now you know...

Q. What is ISO anyway?

A. ISO is 'The International Organization for Standardization'. What does this mean for you? It is to ensure our company supplies a consistent, high quality product and services. It requires us to prove our ability to meet the customer's needs and any associated regulatory requirements.

AUCKLAND DEPOT (Stu)

MAY 14th / 15th → Tauranga area.

AUGUST 12th / 13th → Whangarei area.

NOVEMBER 11th / 12th → Rotorua, Taupo area.

CHRISTCHURCH DEPOT (John)

JUNE 18th / 19th / 20th → Dunedin area.

SEPTEMBER 16th / 17th / 18th → Nelson, Blenheim area.

DECEMBER 2nd / 3rd / 4th / 5th → Invercargill, Queenstown area.

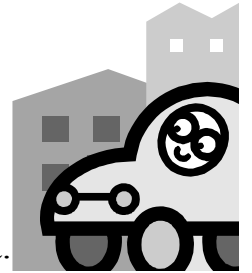
WELLINGTON DEPOT (Clarry)

APRIL 22nd / 23rd / 24th → New Plymouth, Hawera area.

JULY 15th / 16th / 17th / 18th → Hastings, Napier, Gisborne area.

OCTOBER 14th / 15th → Palmerston North area.

Our sales team will be in touch with as many customers as possible when in your area, but if you would like our sales team to drop in to see you, give us a ring or e-mail.



Customer's profile Greymouth Museum

Tiger Scaffolding
03 314 064 / 021 314 4064
tigerscaffolding@xtra.co.nz

Brent Neither is Tiger Scaffolding, he uses the traditional tube & clip. They are based in Blackball and service up and down the West Coast.

Favourite Music.....AC/DC
Favourite Sport.....Rugby League
Favourite Car.....Holden Monaro
Favourite Drink.....Steinlager
Favourite Team.....Crusaders
Favourite Country.....Germany
Favourite Radio Station...Classic Hits
West Coast (The only station on the Coast)
Ambition in Life.....Retire young

